

The RICOH

fax4420L fax4420NF

HIGH PERFORMANCE WORKGROUP LASER FACSIMILE SERIES

color scan
to e-mail

VoIP

IP faxing



RICOH[®]

Shift Office Communications into High Gear...

Seamlessly integrating sophisticated fax performance with workflow efficiency, the RICOH® FAX4420 Series is designed to handle your critical document communication and imaging tasks with ease.

Ricoh has developed two dynamic systems that exceed today's technological requirements for sending hardcopy documents: the Ricoh FAX4420L standalone fax system and the FAX4420NF network fax system. Once documents are scanned, they can be sent to e-mail addresses via the Internet, even in color (Color scan to e-mail). IP Faxing enables documents to be sent to other IP Fax systems at high speeds. VoIP compatibility means that the FAX4420NF can operate over a VoIP phone system. Duplex scanning and printing also help to increase efficiency and reduce cost. Innovative digital technology that streamlines document workflow for dramatic improvements in productivity makes the Ricoh FAX4420 Series the answer for your hard copy document communication needs.



Connectivity Without Complexity

The Ricoh FAX4420NF harnesses the power of your network and the Internet to perform key document distribution and management tasks:

Document Communication & Output

- Color and B&W scan to e-mail
- Internet Faxing
- IP Faxing
- VoIP Compatibility
- LAN Faxing
- Convenience Printing

Document & System Management

- Auto Backup of Received/ Transmitted Documents
- Download of Transaction Journal
- Inbound Fax Routing
- Scan to File/Folder⁴
- (DHCP) Dynamic Host Configuration Protocol
- Remote Programming & Monitoring
- Server Domain Authentication

⁴ This feature requires ScanRouter Software (Pro or Lite). ScanRouter Lite included.

FEATURE	RICOH FAX4420L Standalone Fax System	RICOH FAX4420NF Network Fax System
Standard Paper Capacity	750 sheets (One 250-sheet tray + one 500-sheet tray)	350 sheets (One 250-sheet tray + one 100-sheet Bypass Tray)
Optional Paper Capacity	600 sheets (One 500-sheet tray + one 100-sheet Bypass Tray)	1,000 sheets (Two 500-sheet trays)
Maximum Paper Capacity	1,350 sheets	1,350 sheets
2nd 33.6 Kbps Modem with JBIG	Optional	Optional
Color scan to e-mail	Optional	Standard
Internet Faxing (T.37)	Optional	Standard
IP Faxing Real-Time (T.38)	Optional	Standard
VoIP Compatibility	Optional	Standard
LAN Faxing	Optional	Standard
PCL 5e/6 600 dpi Printer	Optional	Optional

color scan to e-mail

Paperless, Confidential

Color photos, brochures, maps, business charts, floor plans—virtually any paper document—can be scanned into memory (as PDF or JPEG files) and transmitted directly to one or more recipients' e-mail inbox. Scanning in full color (or black & white) has never been easier. What's more, documents transmitted via e-mail do not use the telephone.



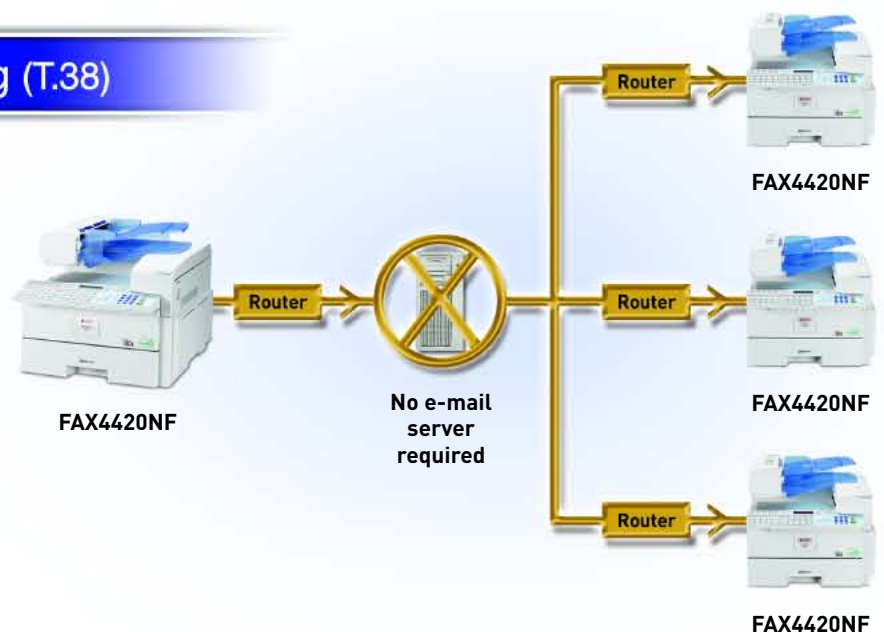
internet fax to internet fax (T.37)

Another "no-charge" method of fax communication is Internet Fax. Like scan to e-mail, you simply enter the e-mail address(es)... only with Internet Fax, the specified address is another Internet Fax. In this case, the document prints upon reception.



IP faxing – real time faxing (T.38)

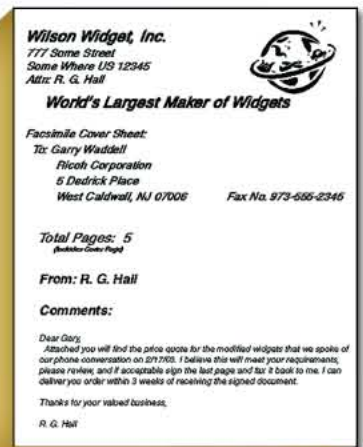
IP Faxing is the communication between a network of Ricoh FAX4420NFs or other IP (T.38)-compatible devices. You simply enter the IP address of the receiving IP Fax system. Similar to a traditional fax communication, the transmission and reception are in real time, with confirmation reports. Unlike a traditional fax, IP Fax is super fast and provides resolutions up to 600 dpi. Also, because communication is over a Local Area Network/Wide Area Network (LAN/WAN), no phone charges are incurred.



LAN fax – convenient desktop faxing

LAN Faxing allows workgroups to increase productivity by sending documents directly from their desktops to the FAX4420NF, to be faxed to any G3 fax unit. A Transmission Result Report can also be automatically returned back to the sender's PC.

The **LAN Fax Cover Sheet Editor** allows each user to create customized fax cover sheets, using both graphics, such as company logos, and text to meet their specific needs.



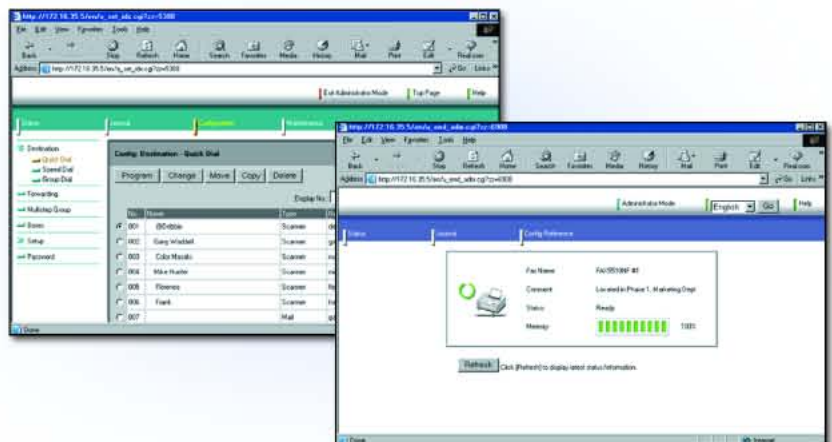
auto document backup – a smart business decision



Documents received or sent via the FAX4420NF can be captured electronically at an archival location, so if the paper document is lost, there is always a copy of the original.

Web Status Monitor – remote access saves time

Through a network computer and Web Browser, quickly check system status. Program or change settings, such as Quick and Speed Dials, network settings, review or download a transaction journal, and even check to see if a system is out of toner or paper.



Easy to Use Operation Panel

10 User Function Keys

Dedicated Internet Fax, scan to e-mail and JPEG Keys. All keys are user-programmable.

User Tools Key opens function menu for fast selection of program settings.

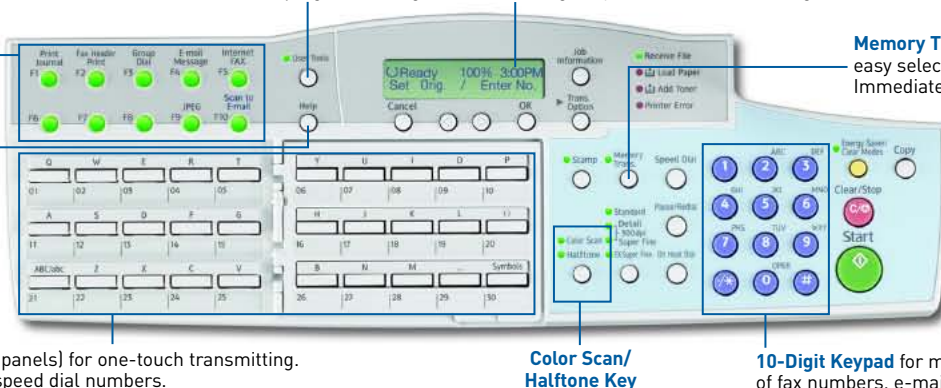
22 x 2-Line LCD with back light for easy viewing of system status and settings.

Memory Transmission Key for easy selection of Memory and Immediate Transmission Mode.

Help Key outlines procedures for frequently used functions.


90 Quick Dial Keys (30 x 3 panels) for one-touch transmitting. In addition, there are 200 speed dial numbers.

The QWERTY Keypad, styled after the PC keyboard, allows easy entry of destination names, fax headers, names and e-mail addresses. If preferred, the keyboard can be changed to ABC format.



Advanced Fax Capabilities of the Ricoh FAX4420L and FAX4420NF

Two Speeds...Fast and Faster

- **Super G3 33.6 Kbps modem with JBIG**  **compression** ensures a fast transmission speed—up to 30 pages per minute¹.
- A **Second 33.6-Kbps (G3) Line** option can be added. Each line operates independently, so two lines are always available for transmission and/or reception. For example, **Simultaneous Broadcast**, where both lines transmit one document at the same time, effectively doubles fax throughput capacity. Or dedicate one line to fax receptions and the other to transmissions.
- A robust **15-ppm printer engine** supports fax receptions, copy runs and print jobs. It utilizes precision laser technology for fast, reliable throughput and outstanding image quality at up to 600 x 600 dpi. In addition, all printed documents are automatically collated.

Server Domain Authentication (FAX4420NF only)

When security and user tracking are an issue for IT Managers, **Server Domain Authentication** is standard on the FAX4420NF⁵.

Authentication limits access to the FAX4420NF, increasing security by monitoring machine usage. Machine access is given only to users with a Windows domain controller account.

Server Authentication will limit access to the FAX4420NF not only for scan to e-mail, but also for standard faxing, IP Faxing, and LAN Faxing.

¹ Approximately 2-seconds per page at 33.6 Kbps with JBIG is dependent upon optimal line quality, and customer performance may vary by location.

⁵ Server Domain Authentication must be turned on by your authorized service representative.

Paper Handling Versatility

- The large capacity **70-sheet Automatic Document Feeder**, and fast **1.3-second per page scan speed** (up to 33 pages per minute) make quick work of storing multi-page documents to memory.
- The generous **standard paper supply** — 750 sheets for the FAX4420L and 350 sheets for the FAX4420NF — is expandable to a total capacity of 1,350 sheets, to meet the needs of high-usage office environments.
- **Compact Design**—The FAX4420 Series footprint is very compact with no trays extending out, maximizing valuable workspace.

Duplexing Saves Time and Money

- **Duplex Fax Reception**—The FAX4420 Series can print received faxes on both sides of the paper, cutting paper costs and saving the time it takes to replenish paper.
- **Duplex Scan**—Two-sided documents can be scanned, eliminating the need to copy the document onto one-sided sheets first, also saving you time and money (except for color scan to e-mail).

15 ppm PCL Printer (Option)

- High quality, PCL5e/6 600 dpi **printing capability** can be added to the FAX4420 Series, allowing duplex printing of documents as well as features such as paper tray selection, slip sheet insertion, and watermark printing. Utilizing the Bypass Tray, specialty papers such as envelopes and labels can be printed.
- A Network Interface Board (NIB) can be added to provide network printing capability. Optional **PostScript Level 2** compatibility is available for Macintosh users.

RICOH FAX4420L/NF SPECIFICATIONS

Type: Desktop Facsimile
Recording Method: Laser
ITU-T Compatibility: Group 3 (V.34); ECM
Modem Speed: 33.6 Kbps with Auto Fallback
Transmit Speed (Max.): 2 seconds per page¹
Data Compression: MH/MR/MMR/JBIG
Scan Speed (Letter, Standard Resolution): 1.3 seconds per page² B&W
4 seconds per page Color
Dual Access: Standard
Document Memory (Standard): 7MB (560 pages²)
Document Memory (Optional): 40MB (2,200 pages²)
Autodialer: 90 Quick Dials; 200 Speed Dials; 9 Groups
User Function Keys: 10 (dedicated keys)
Document Memory Backup: 12 hours with Standard Memory; infinite with 40MB Memory Card
Automatic Document Feeder Capacity: 70 sheets
Document Width/Scan Width/Length (Max.): 8.6"/8.48"/47.2"
Scan Resolution: Standard: 200 x 100 dpi
Detail: 200 x 200 dpi
Super Fine: 400 x 400 dpi
Extra Super Fine: 600 x 600 dpi
Halftone: 64 levels with ARGONA³
Print Speed (Max.): 15 pages per minute
Print Resolution (Max.): 600 dpi (fax and printer)
Resolution Enhancement: Super Smoothing HQTM
Recording Width/Paper Size (Max.): 8.26"/8.5" x 14"
Paper Capacity (Standard):
FAX4420L: 250 sheet letter-size cassette + 500 sheet letter-/legal-size cassette (750 sheets)
FAX4420NF: 250 sheet letter-size cassette + 100 sheet Bypass Tray (350 sheets)
Paper Capacity (Optional):
FAX4420L: 500 sheet letter-/legal-size cassette + 100 sheet Bypass Tray
FAX4420NF: 500 sheet letter-/legal-size cassette x 2
Paper Capacity/Sources (Max.): 1,350 sheets/4
Multi-Copy Capacity: Up to 99 (with duplexing)
LCD Display Size: 2 lines (22 characters each line)
Power Consumption: Max: Less than 1000W
Min: Less than 2W/6W
Power Requirements: 120V, 60Hz
Environment: 59 to 77° F, 30 to 70% RH
Dimensions (WxDxH):
FAX4420L: 17.6" x 21.7" x 21.6"
FAX4420NF: 17.6" x 21.7" x 16.2"
Weight: **FAX4420L:** 61.7 lbs.
FAX4420NF: 50.7 lbs.
Consumable Yields: Toner Cartridge: 5,000 pages²
Photoconductor Unit: 45,000 pages
Optional PFU: 17.0" x 16.1" x 5.5" (WxDxH); weight 10.6 lbs.

INTERNET FAX / IP FAX / VoIP / SCAN TO E-MAIL (NIC FAX UNIT)

Network/Connection: LAN, 100/10Base-T Ethernet, RJ-45
Transmission Speed: 100/10 Mbps
Document Size: 8.5" x 11", 8.5" x 14"
Compatibility: Internet Fax: ITU-T Rec. T.37
IP Fax: ITU-T Rec. T.38
Scan Resolution:
Internet Fax: Standard: 200 x 100 dpi
Detail: 200 x 200 dpi
IP Fax / VoIP Standard: 200 x 100 dpi
Detail: 200 x 200 dpi
Super Fine: 400 x 400 dpi
Extra Super Fine: 600 x 600 dpi

Scanner: Std. B&W: 200 x 100 dpi
Std. Color: 100 x 100 dpi
Detail: 200 x 200 dpi
300 dpi: 300 x 300 dpi
Super Fine: 400 x 400 dpi
Extra Super Fine: 600 x 600 dpi
Internet Protocols: E-mail Trans.: SMTP, TCP/IP
E-mail Rec.: POP3, SMTP, IMAP4, TCP/IP
IP Fax: T.38 Annex B, TCP, UDP/IP
Scanner: FTP, TCP/IP
E-mail Format: Single/Multi-Part, MIME Conversion
Attached File Format: TIFF/(MH Compression), DCX, JPEG, PDF
Security: POP before SMTP, SMTP Authentication, APOP, Server Domain Authentication (Windows 2000, Windows Server 2003, Windows NT4.0)
Dynamic Host Configuration Protocol (DHCP): Standard
Web Status Monitor: Standard

NIC FAX FEATURES

- **Internet Fax & scan to e-mail**
Backup Transmission/Reception
Color/B&W Scan Modes
E-mail Subject/Message/Suffix Templates
Error Mail Notification
Journal by e-mail
Reception Confirmation
ScanRouter Lite Included
- **IP Fax (Real Time, T.38)**
Reception Confirmation
- **VoIP Compatibility**
- **LAN Fax** (Software Included)
Address Book, Broadcast, Convenience Printing

GENERAL SYSTEM FEATURES

Automatic Collation
Clock (with Auto Summer Time Adjustment)
Counters (Tx/Rx/Scn/Prt)
Dual Access (Multitasking)
Scan Duplex Documents
Energy Saver Mode
Help List
Keystroke Programs
Label Registration for Quick/Speed Dials
Personal Codes
Photo (Halftone) Mode
PIN Code Protection
Power Failure Report
QWERTY Keypad
Remaining Memory Indicator
Restricted Access
User Function Keys

FAX COMMUNICATION FEATURES

Chain Dialing
Communication Failure Report
Error Report
Fax Headers (2)
Journal (Auto/Manual Print)
Lists (Quick/Speed/Prog./Grp/User Fnct)
Memory File Transfer
Monitor Speaker
No Document, No Dial
On Hook Dialing
Polling Trans/Reception
Quick Dial Label Print
Redial (Auto/Manual)
Shortened Protocol
Telephone Directory

FAX TRANSMISSION FEATURES

Auto Document
Auto Page Retransmission
Auto Reduction (Transmit)

Backup File Transmission
Batch Transmission
Blank Document Detection
Forwarding
Immediate/Memory Transmission
ITU-T Sub-Address
Label Insertion
Memory Storage Report
Page Count
Page Retransmission
Quick (Parallel) Memory Transmission
Send Later
Serial Broadcast (Immediate/Later)
Simultaneous Broadcast (via Opt. 2nd G3 Modem)
Transfer Request
Transfer Transmission
Transmission Confirmation Report
Transmission Failure Report
Transmission Reserve
Verification Stamp

FAX RECEPTION FEATURES

Authorized Reception
Confidential Reception (with/without ID)
Continuous Polling
Checked Mark (Document Separation)
Duplex Fax Reception
Memory Lock
Memory Polling
Multi-Copy Reception
Multi-Polling Reception
Reception Time Print
Specified Cassette Select (with Optional Paper Cassette)
Substitute Reception
Two-in-One Reception

PRINTER FEATURES

Print Speed (Letter): 15-ppm
Printer Resolution (Max.): 600 x 600 dpi
Interface: Ethernet 100-TX/10-T, IEEE1284 Parallel
Printer Memory (Std/Max.): 16MB/144MB
Operating System: Windows 95/98/Me/NT 4.0/2000/XP
Printer Control Language: PCL5e/6; PostScript 2 (Optional)
Other Features: Duplex, Collate, Slip Sheet, Page Protect, Auto Continue, Auto Tray Select, Tray Lock, Font Storage, Watermark, Toner Saver, Edge Smoothing, User Code, Bypass Tray Print

OPTIONS

100-Sheet Bypass Feeder Type 300
32/64/128 MB Printer Memory Type B
40MB Memory Card (Feature Expander) Type 410
500-Sheet Paper Feed Unit Type PS480
Cabinet Stand
G3 Interface Unit (2nd 33.6 Kbps Line) Type 410
Network Interface Board Type 1018 (see Printer Features)
NIC Fax Unit Type 410 (FAX4420L only)
PostScript 2 Interface Unit Type 1018
Print Controller
Telephone Handset Type 1018

SUPPLIES

ADF Maintenance Kit Type 300
Marker Refill Type 30
Toner Cartridge Type 1160
Photoconductor Unit Type 1013

1 Approximately 2-seconds per page at 33.6 Kbps with JBIG is dependent upon optimal line quality, and customer performance may vary by location.

2 Based on ITU-T Test Chart #1 in Standard resolution.

3 ARGONA® Advanced Ricoh's Graphic Operation by New ASIC based on diffusion method.

4 This feature requires ScanRouter Software (Pro or Lite). ScanRouter Lite included.

Specifications are subject to change without notice. All product names are trademarks of their respective holders.



Ricoh Corporation has determined that this product meets the Energy Star® guidelines for energy efficiency.



Printed in U.S.A. on recycled paper because Ricoh cares.

Ricoh is a registered trademark of Ricoh Company, Ltd. holders.
©Ricoh Corporation



Our earth,
Our tomorrow

RICOH®

Image Communication

Ricoh Corporation, Five Dedrick Place, West Caldwell, NJ 07006

Phone: (973) 882-2000 Website: <http://www.ricoh-usa.com>

FA-0453