

**Aficio<sup>®</sup>**  
**1515/1515F/1515MF**

**The Productivity You Need ...**  
**The Affordability You Need**



**DIGITAL TECHNOLOGY**

**DESKTOP DESIGN**

**EASY CONNECTIVITY**

**RICOH RELIABILITY**

**RICOH<sup>®</sup>**

**Configured to Meet the Demands of Today's Small Office/Workgroup**



	<b>Ricoh Aficio 1515</b>	<b>Ricoh Aficio 1515F</b>	<b>Ricoh Aficio 1515MF</b>
	copy	copy/fax	copy/fax/print/scan
<b>Overview</b>	At 15 PPM, the Ricoh Aficio 1515 is the ideal system for offices or workgroups that are limited in space but require high-end performance at an affordable price.	At 15 PPM, the Ricoh Aficio 1515F offers the same capabilities as the Ricoh Aficio 1515 but features standard fax functionality.	At 15 PPM, the Ricoh Aficio 1515MF provides all the functionality of the Ricoh Aficio 1515F plus Network Printing and Scanning – a great way to lower overall operating costs.
<b>Copy/Print Speed</b>	15 PPM	15 PPM	15 PPM
<b>Automatic Document Feeder</b>	Standard/30 Sheets	Standard/30 Sheets	Standard/30 Sheets
<b>Standard Paper Capacity</b>	350 Sheets	350 Sheets	350 Sheets
<b>Maximum Paper Capacity</b>	850 Sheets	850 Sheets	850 Sheets
<b>Automatic Duplexing (1:2)</b>	Standard	Standard	Standard
<b>Network Printing/Scanning</b>	Optional	Not Available	Standard
<b>Scan to E-mail</b>	Optional	Not Available	Standard
<b>Faxing</b>	Not Available	Standard	Standard
<b>Internet Faxing (T.37)</b>	Not Available	Not Available	Standard
<b>LAN-Faxing</b>	Not Available	Not Available	Standard



### **Affordable Cost of Ownership**

For small companies, smart financial management is the key to staying in business. That's why the Ricoh Aficio 1515/1515F/1515MF incorporates technology designed to reduce total cost of ownership.

- Multifunctional systems eliminate the need to purchase and maintain multiple systems and their supplies. An added benefit is that you'll produce print and fax pages at copier page costs—a great way to regulate overall document production costs.
- A dual component consumable design simplifies routine maintenance while lowering cost-per-page.

Multifunction solutions for the workgroup or desktop.

1515/1515F/1515MF

**With the RICOH® Aficio® 1515, 1515F and 1515MF, you configure the solution that's right for your small business workgroup or professional practice.**

With the RICOH Aficio 1515/1515F/1515MF, you'll get "big office" performance without the "big office" price tag. Plus, you decide how you would like to customize your system with a choice of three configurations right out of the box...

Ricoh Aficio 1515 Digital Copier, Ricoh Aficio 1515F Digital Copier and Fax or Ricoh Aficio 1515MF Digital Copier, Fax, Printer and Network Scanner. Best of all... regardless of the system you select, you can be certain that you've made an intelligent choice.

**Regardless of your small workgroup needs, there's a Ricoh system that's right for you.**



## Digital Technology Meets Solid Copier Functionality

The Ricoh Aficio 1515/1515F/1515MF incorporates a wealth of digital features and advanced paper-handling capabilities designed to optimize the document imaging process from start to finish—capabilities that ensure maximum user productivity, provide reliable performance and offer consistently professional image quality.

- **Scan originals once**, then go back to work while the Ricoh Aficio 1515/1515F/1515MF produces the desired number of copies.
- **Standard Auto Duplex copying\*** and **Duplex printing** capability significantly reduces paper, hardcopy storage and postage costs.
- From the platen, **easily copy double-sided originals** such as insurance cards side by side on a single sheet of paper at the touch of the Combine key.
- **Automatically sort copies from memory**, which does away with time-consuming hand collation.
- Enjoy quick access to all of the Ricoh Aficio 1515/1515F/1515MF's capabilities via an

**Automatic Document Feeder** .....  
30 sheet capacity

**Control Panel** .....

**Bypass Tray** .....  
100 sheet capacity

**Standard Paper Bank** .....  
250 sheet capacity

**Optional Paper Bank** .....  
500 sheet capacity



Fully configured system shown above

**intuitive Control Panel**, which features a 4-Line Back Lit Display and Directional Cursor Keys.

- Reduce time-consuming paper replenishment tasks thanks to a **maximum paper capacity of 850 sheets** from three sources—one of

which is the versatile **100 Sheet Bypass Tray**, which also accepts envelopes.

- Copy 8.5" x 14" documents and scan up to 30 sheets using the **standard Automatic Document Feeder**.

\*1-sided to 2-sided

## Multi-Tasking Is In the Box

With the Ricoh Aficio 1515F or Ricoh Aficio 1515MF, you'll benefit from all the functionality of the Ricoh Aficio 1515 and you'll gain the following productivity boosters...

### High-End Fax Capabilities— Ricoh Aficio 1515F/ Ricoh Aficio 1515MF

For environments with demanding hardcopy—and electronic—fax requirements, the Ricoh Aficio 1515F/1515MF provide powerful communication functionality with capabilities that can accommodate virtually any fax application.

- Quickly transmit your documents in as little as two seconds per page with the **Super G3 33.6Kbps Modem** and **JBIG Compression**.
- Juggle two tasks at any given time; scan documents for transmission while the Ricoh Aficio 1515F/1515MF is printing a reception.

- Get through the busiest of days with an array of features—including **Batch Transmission**, **Serial Broadcasting** and **Send Later**—that automate virtually all aspects of the fax process.

### LAN-Fax and Internet Fax— Ricoh Aficio 1515MF

In addition to an outstanding hardcopy fax feature set, the Ricoh Aficio 1515MF offers the ability to...

- Utilize **Inbound Fax Routing** of documents directly to a PC to reduce paper costs.

- Send a fax to another Internet fax—or e-mail address—via the Internet, using the **T.37 Internet Fax** feature, which eliminates costly long distance and/or international phone costs.

- Send faxes without leaving your desk...just select the LAN Fax driver and transmit documents via the **LAN Fax** feature and a **Transmission Result Report** is sent directly to the sender's e-mail address.

- Customize your own fax header, including company logos, using the **Fax Cover Sheet Editor**.



Any G3 Fax


Ricoh Aficio 1515MF

E-Mail/Archive

**Inbound Fax Routing**

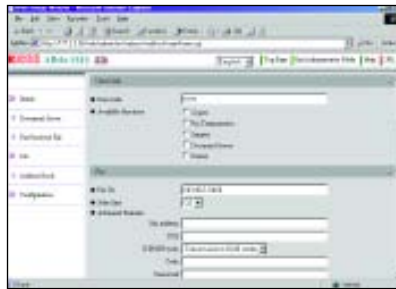
## High Performance Printing and Scanning— Ricoh Aficio 1515MF

Need a high quality printer and scanner? No problem...

- Quickly connect to your network via a **standard 10/100BaseT Ethernet connection**. Or, choose the **standard USB 2.0 interface** and connect the Ricoh Aficio 1515MF directly to a PC.
- Eliminate unsightly  **Bluetooth™** cables and allow complete placement versatility using **Wireless LAN and Bluetooth™ options**.
- Choose between the **IEEE 1284 Parallel or IEEE 1394 FireWire™ options**, which are ideal for those who require reliable and fast connections to non-networked PCs.



Quickly connect to your PC or the network.



Easily enter fax addresses through Web Image Monitor.

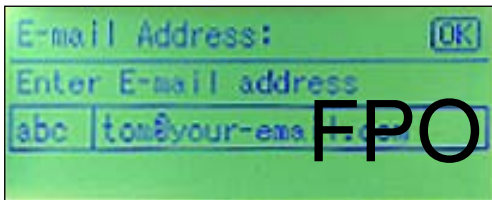
## Raising the Bar on Network Printing

The Ricoh Aficio 1515MF provides **Duplex Printing** and out-of-the-box support for today's most prevalent business software applications thanks to standard PCL 5e/6 and optional Adobe PostScript 3. And, we've created a new, user friendly, icon-based print driver software—**RPCS™, Refined Print Command Stream**—which allows users to output print jobs with just one click of the mouse.



RPCS Driver allows you to output print jobs with a single click.

Additionally the Ricoh Aficio 1515MF can be managed through a trio of network printer management utilities—**Web SmartDeviceMonitor, Web Image Monitor and SmartDeviceMonitor**—that are sure to please busy IT professionals. Users and IT staff can monitor and manage all Ricoh Aficio 1515MF functions—print, copy, fax and scan—via a standard web browser using Web SmartDeviceMonitor or Web Image Monitor or by a quick glance at an icon located on the Windows Taskbar using SmartDeviceMonitor.



The Ad hoc Scan to E-mail features allow you to enter e-mail addresses from the control panel.

## Versatile Electronic Document Delivery Capabilities

Network Scanning is the key to cost-effective and efficient management of digital and existing hardcopy documents.

- **Embedded Scan to E-mail** enables users to communicate important information quickly and at a fraction of the cost of traditional overnight delivery services, without any additional software or dedicated server. Easily meet tight deadlines by scanning or faxing hardcopy documents to multiple e-mail addresses in TIFF or PDF format. Additionally, you'll eliminate the expense of making extra copies of documents needed for multiple recipients.
- Standard **ScanRouter V2 Lite** software makes it easy to share hardcopy information such as spreadsheets or drawings. And, optional **ScanRouter V2 Professional** software is ideal for environments with more robust scanning requirements—providing Scan to Folder/File and OCR capabilities.
- **Network TWAIN Scanning** eliminates the need for desktop scanners—enabling users to scan hardcopy originals directly to an image editing application in the PC.

## FRIEND TO THE ENVIRONMENT

Ricoh continues to promote a longstanding commitment to environmentally friendly manufacturing policies. With that in mind, the Ricoh Aficio 1515/1515F/1515MF incorporate a variety of energy-friendly capabilities.

- Quick Start Up Technology ensures consistent use of the Energy Saver Mode by facilitating a speedy Recovery Time of just 10 seconds.
- You can place your Ricoh Aficio 1515/1515F/1515MF right next to the people who use it thanks to its extremely quiet operation.
- Highly productive duplex copying and printing cuts paper consumption and costs in half.



# Aficio®

## 1515/1515F/1515MF

### SPECIFICATIONS

## Integrated Digital Imaging Systems

### Engine/Copier Specifications

<b>Configuration:</b>	Console
<b>Scanning Element:</b>	Flatbed with CCD array image-sensor
<b>Printing Process:</b>	Laser beam scanning/marketing & electro-photographic printing
<b>Toner:</b>	Dry, Dual Component
<b>System Memory (std./max):</b>	Ricoh Aficio 1515 16MB; 1515F 64MB; 1515MF 192MB
<b>Copy Resolution:</b>	600 x 600 dpi
<b>Grayscale:</b>	256 levels
<b>Exposure Adjustment:</b>	Manual & Automatic
<b>Quantity Indicator:</b>	1 – 99
<b>Original Type:</b>	Sheet/Book
<b>Maximum Original Size:</b>	8.5" x 14" through Automatic Document Feeder
<b>Copy Size:</b>	5.5" x 8.5" to 8.5" x 14" through Bypass Tray and Optional Paper Bank
<b>Copy Type:</b>	Plain Paper; Envelopes, Transparencies (through Bypass Tray)
<b>Warm-up Time:</b>	Ricoh Aficio 1515 – 15 seconds; Ricoh Aficio 1515F & 1515MF – 30 seconds
<b>First Copy Speed:</b>	Less than 7.5 seconds
<b>Continuous Copying Speed:</b>	15 cpm – simplex 9 cpm – duplex
<b>Duplex:</b>	Yes (1:2)
<b>Recovery Time:</b>	10 seconds (from Energy Saver Mode)
<b>Energy Saver Mode:</b>	1W (Ricoh Aficio 1515); 10W (Ricoh Aficio 1515F/1515MF)
<b>Power Source:</b>	120V/60HZ
<b>Dimensions (WxDxH):</b>	18.43" x 17.72" x 20.12" (with Automatic Document Feeder)
<b>Weight:</b>	Ricoh Aficio 1515 with ADF – 52.91 lbs. Ricoh Aficio 1515F – 55.12 lbs. Ricoh Aficio 1515MF – 55.12 lbs.
<b>Standard Paper Capacity:</b>	250 sheets x 1 tray and 100 sheet multi bypass tray
<b>Optional Paper Capacity:</b>	500 sheets x 1 tray
<b>Paper Size:</b>	5.5" x 8.5" – 8.5" x 11" – standard tray 5.5" x 8.5" – 8.5" x 14" – bypass tray
<b>Paper Weight:</b>	16-24 lb. Bond – Tray 1 and Duplex 16-42 lb. Bond – Bypass Tray
<b>Reduction Ratios:</b>	65%, 78%, 93%
<b>Enlargement Ratios:</b>	129%, 155%
<b>Zoom:</b>	50% to 200% in 1% increments
<b>Standard Features:</b>	Auto Start, Combine Copy, Duplex Copying, Duplex Printing, Electronic Sort, Photo Mode
<b>Optional Features with 500 x 1 Paper Bank:</b>	Auto Tray Switching

### Printer Specifications

<b>Print Speed:</b>	15 ppm
<b>CPU:</b>	TMPR495B-300 240MHZ
<b>Standard Interfaces:</b>	10/100 Base TX USB 2.0
<b>Optional Interfaces:</b>	IEEE 802.11b Wireless LAN Bluetooth IEEE 1394 IEEE 1284 Parallel Port
<b>Memory Capacity:</b>	64MB Resident, plus 128MB pre-installed in Ricoh Aficio 1515MF
<b>Network Protocol:</b>	TCP/IP, IPX/SX, SMB, AppleTalk
<b>Utilities:</b>	SmartDevice Monitor, Web SmartDevice Monitor, Web Image Monitor-available with Ricoh Aficio 1515MF only
<b>Page Description Languages:</b>	PCL5e/6, RPCS PostScript3 (optional)
<b>Print Resolution:</b>	PCL5e: 300 dpi, 600 dpi PCL6: 600 dpi RPCS: 300 dpi, 600 dpi PS3: 600 dpi
<b>Grayscale:</b>	256 levels
<b>Fonts for PCL5e/6:</b>	35 Intellifonts, 10 TrueType Fonts, 1 Bitmap
<b>Fonts for PS3:</b>	136 PostScript Fonts
<b>Drivers for PCL5e/6, RPCS:</b>	Windows 9x/Me, NT4.0, 2000, XP, 2003
<b>Drivers for PS3:</b>	Windows 9x/Me, NT4.0, 2000, XP, 2003, Macintosh 8.6-9.2X (OS X Classic), Macintosh OSX Native (v.10.1 or Later)

### Scanner Specifications

<b>Scanning Speed:</b>	Embedded Scan to E-mail: 22 ipm (@200 dpi) ScanRouter: 22 ipm (@200 dpi) TWAIN: 18 ipm (@200 dpi)
<b>Scanning Resolution:</b>	600 dpi
<b>Scan Area:</b>	8.5" x 11" – platen 8.5" x 14" – ADF
<b>Interface:</b>	10/100 Base TX IEEE 802.11b Wireless LAN IEEE 1394
<b>Protocol:</b>	SMTP, TCP/IP
<b>Memory Capacity:</b>	64MB Resident, plus 128MB pre-installed in Ricoh Aficio 1515MF (shared with printer)
<b>File Format:</b>	Single Page TIFF; Multi-Page TIFF; PDF

### Fax Specifications

<b>Circuit:</b>	PSTN, PBX
<b>Compatibility:</b>	ITU-T (CCITT) G3
<b>Resolution:</b>	200 x 100 dpi; 200 x 200 dpi; 200 x 400 dpi
<b>Compression Method:</b>	MH, MR, MMR, JBIG
<b>Scanning Speed:</b>	Less than 2 seconds
<b>Modem Speed:</b>	33.6 Kbps with Auto Fallback
<b>Transmission Speed:</b>	G3: 3.0 seconds per page (w/o JBIG) G3: 2.0 seconds per page (with JBIG)
<b>Memory:</b>	2MB; 160 pages*
<b>Memory Backup:</b>	One Hour
<b>Quick Dials:</b>	16 (out of 150 speed dials)
<b>Speed Dials:</b>	150
<b>Group Dials:</b>	10 (max 100 numbers per group)
<b>ID Code Programming:</b>	4 digits
<b>User Function Key:</b>	3 keys
<b>User Codes:</b>	8 digits (50 personal codes)
<b>Standard Features:</b>	Batch Transmission, Dual Access, One Hour Backup, Serial Broadcasting

\*Based on ITU-T Test Chart #1 in standard mode.

### Options

<b>500 sheets x 1 Paper Bank:</b>	
<b>Paper Size:</b>	8.5" x 11" SEF, 8.5" x 14" SEF
<b>Paper Weight:</b>	16-24 lb. Bond
<b>Paper Capacity:</b>	1 x 500 sheets
<b>Scanner/Printer Kit:</b>	
<b>Bundled Software includes:</b>	ScanRouter V2 Lite DeskTopBinder V2 Lite
<b>PostScript3 Type B</b>	
<b>IEEE 1284 Interface Type A</b>	
<b>IEEE 1394 Interface Board Type B:</b>	
<b>Included Cables:</b>	2.0 m 6 pin to 4 pin cable 2.0 m 6 pin to 6 pin cable
<b>Hardware Specifications:</b>	6 pins
<b>Data Transmission Speeds:</b>	400/200/100 Mbps
<b>System Requirements for IP over 1394:</b>	MS-Windows 2000, XP
<b>IEEE 80211b Wireless LAN Interface Type D:</b>	
<b>Data Transmission Speeds:</b>	1/2/5.5/11 Mbps
<b>Protocol:</b>	TCP/IP
<b>Connection Types:</b>	Ad hoc mode Infrastructure mode
<b>Distance Between Devices:</b>	151 to 1,300 feet (140 to 400 meters)
<b>Bluetooth Interface Type 2238:</b>	
<b>Data Transmission Speeds:</b>	1 Mbps
<b>Supported OS:</b>	Windows XP, 2000, 98 SE, Me (dependent on Bluetooth Card)
<b>Distance Between Devices:</b>	33 feet (10 meters)

Ricoh Consumables: For maximum performance and yield, we recommend genuine Ricoh parts and supplies. Specifications and external appearance subject to change without notice.

# RICOH®

## Image Communication

Ricoh Corporation, Five Dedrick Place, West Caldwell, NJ 07006  
Phone: (973) 882-2000 • Web Site: <http://www.ricoh-usa.com>



EPA 2000 Office Products Partner of the Year (5<sup>th</sup> consecutive year)  
EPA 2000 Labeling Partner of the Year  
Ricoh Corporation has determined that this product meets the Energy Star® guidelines for energy efficiency.

